



BPC Central Sewershed Package 3A
Solicitation Number: CO-00435
Job No.: 20-4526

ADDENDUM 1
June 30, 2021

To Bidder of Record:

This addendum, applicable to work referenced above, is an amendment to the bid proposal, plans, and specifications and as such will be a part of and included in the Contract Documents. Acknowledge receipt of this addendum by entering the Addendum number and issue date on the space provided in submitted copies of the bid proposal.

RESPONSES TO QUESTIONS

1. Question: Does HDPE have to be used for pipe bursting or can PVC be used instead?

Response: Refer to Specification Item No. 900 Reconstruction of Sanitary Sewer by Pipe Bursting Replacement Process available in the SAWS 2020 Specifications link listed in the Table of Contents and the following line items listed in the Bid Proposal and Plans:

- *Spec 900 Pipe Bursting 8" Sanitary Sewer Pipe 8" Sanitary Sewer Pipe (DR 13.5 160 PSI)(All Depths)*
- *Spec 900 Pipe Bursting 10" Sanitary Sewer Pipe 8" Sanitary Sewer Pipe (DR 13.5 160 PSI)(All Depths)*
- *Spec 900 Pipe Bursting 12" Sanitary Sewer Pipe 8" Sanitary Sewer Pipe (DR 13.5 160 PSI)(All Depths)*

CHANGES TO THE SPECIFICATIONS

1. Bid Proposal, BP-1 to BP-3 – Remove in its entirety and replace with the revised version attached to this addendum. Respondents will utilize the attached Bid Proposal form in their submittals. Failure to use the revised bid proposal may result in the Contractor's bid being found non-responsive and rejected.
2. Statement of Bidder's Experience forms, Page SBE-1 to SBE-3 – Remove in its entirety and replace with the revised version attached to this addendum. SBE time period has been revised from 2015-2020 to 2015-2021.

CHANGES TO THE PLANS

1. Sheet G-006 Estimated Quantities – Remove Sheet G-006 in its entirety and replace with the revised version attached to this addendum.

CLARIFICATIONS

1. Bid Proposal, BP-1 to BP-3 – Quantity for Item 58: Spec 852: 4' Dia. Sanitary Sewer Manhole (0'-6' Depth) Watertight has been revised from a total of 19 to a total of 20.
2. Sheet G-006 Estimated Quantities – Quantity for Item 58: Spec 852: 4' Dia. Sanitary Sewer Manhole (0'-6' Depth) Watertight has been revised from a total of 19 to a total of 20.

3. The estimated construction cost has increased from \$3,533,913.00 to \$3,542,913.00 and has been noted on the SAWS website.

END OF ADDENDUM

This Addendum, including these 2 pages, is 9 pages with attachments in its entirety.

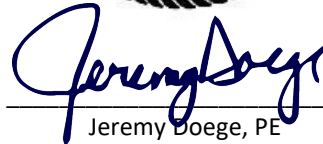
Attachments:

Revised Bid Proposal (3 pages)

Revised Statement of Bidder's Experience (3 pages)

Revised Sheet G-006 Estimated Quantities (1 page)





6-30-2021

Jeremy Doege, PE
WGI, Inc.

BID PROPOSAL

PROPOSAL OF _____, a corporation
a partnership consisting of _____
an individual doing business as _____

THE SAN ANTONIO WATER SYSTEM:

Pursuant to Instructions and Invitation to Bidders, the undersigned proposes to furnish all labor and materials as specified and perform the work required for the project as specified, in accordance with the Plans and Specifications for the following prices in the bid proposal to wit:

PLEASE SEE ATTACHED LIST OF BID ITEMS.

BIDDER'S SIGNATURE & TITLE

FIRM'S NAME (TYPE OR PRINT)

FIRM'S ADDRESS

FIRM'S PHONE NO. /FAX NO.

FIRM'S EMAIL ADDRESS

The Contractor herein acknowledges receipt of the following:
Addendum Nos. _____

OWNER RESERVES THE RIGHT TO ACCEPT THE OVERALL MOST RESPONSIBLE BID.

The bidder offers to construct the Project in accordance with the Contract Documents for the contract price, and to complete the Project within **365** calendar days after the start date, as set forth in the Authorization to Proceed. **The bidder understands and accepts the provisions of the contract Documents relating to liquidated damages of the project if not completed on time.**

Complete the additional requirements of the Bid Proposal which are included on the following pages.

Statement on President's Executive Orders

Has your firm previously performed work subject to the President's Executive Orders Numbers 11246 and 11375 or any preceding similar executive orders (Numbers 10925 and 11114)?

Yes No

BPC Central Sewershed Package 3A
SAWS Solicitation No. CO-00435
SAWS Job No. 20-4526

ITEM	SPEC	DESCRIPTION	UNIT	QTY	UNIT COST	TOTAL
1	103.1	Remove Concrete Curb (COSA Spec)	LF	365		
2	103.3	Remove Concrete Sidewalks & Driveways (COSA Spec)	SF	2,973		
3	202.1	Prime Coat (COSA Spec)	GAL	356		
4	203.1	Tack Coat (COSA Spec)	GAL	1,350		
5	205.2	Hot Mix Asphaltic Pavement, Type B (10" Comp. Depth) (COSA Spec)	SY	941		
6	205.2	Hot Mix Asphaltic Pavement, Type B (12" Comp. Depth) (COSA Spec)	SY	40		
7	205.3	Hot Mix Asphaltic Pavement, Type C (3" Comp. Depth) (COSA Spec)	SY	12,580		
8	205.4	Hot Mix Asphaltic Pavement, Type D (2" Comp. Depth) (COSA Spec)	SY	2,505		
9	208.1	Salvaging, Hauling, and Stockpiling Reclaimable Asphaltic Pavement (2" Depth)	SY	1,967		
10	208.2	Salvaging, Hauling, and Stockpiling Reclaimable Asphaltic Pavement (3" Depth)	SY	12,232		
11	401.1	Reinforced Concrete Pipe (Class III)(48") (COSA Spec)	LF	32		
12	413.2	Flowable Fill (High Strength)	CY	30		
13	500.1	Concrete Curb	LF	220		
14	502.1	Concrete Sidewalks	SY	300		
15	503.1	Portland Cement Concrete Driveway	SY	100		
16	503.2	Portland Cement Concrete Driveway - Commercial	SY	50		
17	503.5	Gravel Driveway (COSA Spec)	SY	142		
18	506.1	Concrete Retaining Walls	CY	1		
19	507.1	Chain Link Wire Fence (4' High) (Remove and Replace) (COSA Spec)	LF	60		
20	SS1	Wood Privacy Fence (6' High) (Remove and Replace) (COSA Spec)	LF	230		
21	507.7	Iron Fence (6' High) (Remove and Replace) (COSA Spec)	LF	10		
22	515.1	Topsoil (COSA Spec)	CY	109		
23	516.1	Bermuda Sodding	SY	1,000		
24	520.1	Hydromulching, Residential or Commercial (COSA Spec)	SY	100		
25	530.7	Barricades, Signs, Traffic Handling (COSA Spec) (Site 1, 15, 16-18)	EA	5		
26	530.7	Barricades, Signs, Traffic Handling (COSA Spec) (Site 2-5, 7-11, 19-20)	EA	11		
27	530.7	Barricades, Signs, Traffic Handling (COSA Spec) (Site 6, 12, 14)	EA	3		
28	530.7	Barricades, Signs, Traffic Handling (COSA Spec) (Site 13)	EA	1		
29	535.1	4 Inch Wide Yellow Line (COSA Spec)	LF	4,998		
30	535.2	4 Inch Wide White Line (COSA Spec)	LF	1,250		
31	535.4	8 Inch Wide White Line (COSA Spec)	LF	605		
32	535.7	24 Inch Wide White Line (COSA Spec)	LF	393		
33	535.9	Left White Arrow	EA	1		
34	535.7	Traffic Button (Type W)	EA	126		
35	535.7	Traffic Button (Type Y)	EA	126		
36	539.5	12 Inch Wide Yellow Line	LF	136		
37	540	SWPPP (Sites 1-20)	LS	1		
38	550.1	Trench Excavation Safety Protection	LF	3,323		
39	801	Tree and Landscape Protection (Level IIB) (COSA Spec)	LF	120		
40	818	6" PVC Waterline (All Depths)	LF	59		
41	836	Pipe Fittings, All Sizes and Types	TN	0.2		
42	840	6" Water Tie-Ins	EA	2		
43	841	Hydrostatic Testing	EA	1		
44	844	2" Temporary Blow-Off Assembly	EA	2		
45	848	8" PVC Gravity Sanitary Sewer Pipe (SDR-26, ASTM 2241, 160 PSI) (0'-6' Depth)	LF	378		
46	848	8" PVC Gravity Sanitary Sewer Pipe (SDR-26, ASTM 2241, 160 PSI) (6'-10' Depth)	LF	448		
47	848	8" PVC Gravity Sanitary Sewer Pipe (SDR-26, ASTM 2241, 160 PSI) (10'-14' Depth)	LF	206		
48	848	10" PVC Gravity Sanitary Sewer Pipe (SDR-26, ASTM 2241, 160 PSI) (0'-6' Depth)	LF	536		
49	848	10" PVC Gravity Sanitary Sewer Pipe (SDR-26, ASTM 2241, 160 PSI) (6'-10' Depth)	LF	64		
50	848	10" PVC Gravity Sanitary Sewer Pipe (SDR-26, ASTM 2241, 160 PSI) (10'-14' Depth)	LF	708		
51	SP814	10" Ductile Iron (DI) (Flanged Joint - Aerial Crossing)	LF	98		
52	814	10" Ductile Iron (DI) (All Depths)	LF	258		
53	848	12" PVC Gravity Sanitary Sewer Pipe (SDR-26, ASTM 2241, 160 PSI) (6'-10' Depth)	LF	153		
54	848	12" PVC Gravity Sanitary Sewer Pipe (SDR-26, ASTM 2241, 160 PSI) (10'-14' Depth)	LF	300		

BPC Central Sewershed Package 3A
SAWS Solicitation No. CO-00435
SAWS Job No. 20-4526

55	849	Sanitary Sewer Acceptance Testing (Open Cut Only)	LF	3,149		
56	850	Sanitary Sewer Structures	EA	1		
57	851	Adjust Existing Manholes (W/ New Ring and Watertight Cover)	EA	14		
58	852	4' Dia. Sanitary Sewer Manhole (0'-6' Depth) Watertight	EA	20		
59	852	4' Dia. Shallow Flat Top Sanitary Sewer Manhole (0'-4' Depth) Watertight	EA	3		
60	853	6' Dia. Shallow Flat Top Sanitary Sewer Manhole (0'-4' Depth) Watertight	EA	1		
61	852	Extra Depth Manhole (>6')	VF	35		
62	852	4' Dia. Sanitary Sewer Drop Manhole (0'-6' Depth) Watertight	EA	2		
63	852	Extra Depth Drop Manhole (>6')	VF	20		
64	852	Cast-In-Place Concrete, 4' Dia. (Permanent Doghouse)	EA	1		
65	854	Sanitary Sewer Laterals (SDR-26, ASTM 2241)	LF	1,275		
66	854.1	Two-Way Sanitary Sewer Cleanout (Heavy Duty)	EA	86		
67	854.2	One-Way Sanitary Sewer Cleanout	EA	3		
68	855	Reconstruction of Existing Manholes	EA	5		
69	856	24" Steel Casing (0.375") (Open Cut)	LF	15		
70	856	8" PVC Carrier Pipe (Open Cut)	LF	15		
71	858	Concrete Encasement, Cradles, Saddles, & Collars	CY	61		
72	860	Vertical Stacks	VF	140		
73	862	Abandonment of Sanitary Sewer Mains (Grouted Mains Only)	LF	1,284		
74	862	Abandonment of Sanitary Sewer Manholes	EA	10		
75	864-S2	Bypass Pumping (Large Diameter Sanitary Sewer) (Site 14)	LS	1		
76	865	Bypass Pumping (Small Diameter Sanitary Sewers) (All Sites)	EA	20		
77	866	Sewer Main Pre-Television Inspection (8"-15" Dia.)	LF	5,957		
78	866	Sewer Main Post-Television Inspection (8"-15" Dia.)	LF	3,165		
79	900	Pipe Bursting 8" Sanitary Sewer Pipe (DR 13.5 160 PSI) (All Depths)	LF	1,792		
80	900	Pipe Bursting 10" Sanitary Sewer Pipe (DR 13.5 160 PSI) (All Depths)	LF	119		
81	900	Pipe Bursting 12" Sanitary Sewer Pipe (DR 13.5 160 PSI) (All Depths)	LF	109		
82	901	Install CIPP 8" Sanitary Sewer Pipe (Hot Water) (All Depths)	LF	438		
83	910.1	Manhole Rehabilitation (Standard 4' Dia. Manhole)	VF	105		
84	1103.1	Point Repairs for 18" and Smaller Dia. (All Depths) Including up to 9 LF of Piping	EA	5		
85	1103.2	Extra Length Point Repair, 18" and Smaller Dia. (All Depths)	LF	24		
86	1103.3	Obstruction Removal by Remote Device, 18" and Smaller Dia. (All Depths)	EA	1		
87	1109	Service Reconnection By Remote Control Cutting Device (All Depths)	EA	2		
88	1109	Service Reconnection By Open Cut Excavation (All Depths)	EA	37		
89	SS 1380.1	Pre-Construction Inspection and Video Documentation	EA	3		
90	SS 3300.1	Sanitary Sewer Private Laterals (4"-6") (Mebane)	EA	5		
91	SS 3300.2	Sanitary Sewer Private Laterals (4"-6") (Picoso)	EA	5		
92	SS 6001	Portable Changeable Message Sign	EA	13		
93	SC3	CPS Energy Allowance	ALW	1	\$70,000.00	\$70,000.00
94	2050	Structure (Shed) Relocation (4419 Hall Park)	LS	1		
95	2051	Concrete Foundation Removal (4419 Hall Park)	LS	1		
				Subtotal (Items 1-95)		
96	100	Mobilization (10% Maximum of <u>Line Items 1-92, 94-95</u>)	LS	1		
97	101.1	Preparing Right-of-Way (5% Maximum of <u>Line Items 1-92, 94-95</u>)	LS	1		
Mobilization and Prep ROW shall be limited to the maximum percentage shown. If the percentage exceeds the allowable maximum stated for the mobilization and/or preparation of ROW, SAWS reserves the right to cap the amount at the percentages shown and adjust the extensions of the bid items accordingly.						
				TOTAL (LINE ITEMS 1-95 AND 96-97)		

**STATEMENT OF BIDDER'S
EXPERIENCE**

**BPC Central Sewershed Package 3A
SAWS Job No. 20-4526
SAWS Solicitation No. CO-00435**

A. Please complete all the fields below. Projects A-1, A-2, and A-3 shall be separate projects.

Bidder must answer all questions completely and all information must be clear, accurate and comprehensive.

If all fields are not completed, the Bid is at risk for being rejected due to non-responsiveness. It is not acceptable to indicate "See attached".

Project A-1 is to have been completed by the Bidder.

- Project A-1 demonstrates performing of a minimum of 1,000 LF by pipe burst construction for sanitary sewer mains 8-inches and greater.
- Project A-1 was completed between 2015 and 2021.

Project A-1 Description

Name of Project: _____ Location: _____

Scope of Work: _____

Pipe Sizes: _____ Pipe Lengths: _____

*Owner Point of Contact (POC): _____ Owner POC Title: _____

Owner POC Phone Number: _____ Construction Cost: _____

Project Start Date: _____ Project End Date: _____

Additional Information: _____

*Owner is defined as entity the Bidder performed work for (i.e. City, County, Utility, State, etc.)

Bidder must provide a specific name with contact information that has previously verified. The design engineer may not serve as reference for the Bidder.

If all fields are not completed, the Bid is at risk for being rejected due to non-responsiveness. It is not acceptable to indicate "See attached".

Project A-2 is to have been completed by the Bidder.

- Project A-2 demonstrates performing of a minimum of 1,000 LF by pipe burst construction for sanitary sewer mains 8-inches and greater.
- Project A-2 was completed between 2015 and 2021.

Project A-2 Description

Name of Project: _____ Location: _____

Scope of Work: _____

Pipe Sizes: _____ Pipe Lengths: _____

*Owner Point of Contact (POC): _____ Owner POC Title: _____

Owner POC Phone Number: _____ Construction Cost: _____

Project Start Date: _____ Project End Date: _____

Additional Information: _____

*Owner is defined as entity the Bidder performed work for (i.e. City, County, Utility, State, etc.)

Bidder must provide a specific name with contact information that has previously verified. The design engineer may not serve as reference for the Bidder.

If all fields are not completed, the Bid is at risk for being rejected due to non-responsiveness. It is not acceptable to indicate "See attached".

Project A-3 is to have been completed by the Bidder.

- Project A-3 demonstrates performing of a minimum of 1,000 LF by open cut construction for sanitary sewer mains 8-inches and greater.
- Project A-3 was completed between 2015 and 2021.

Project A-3 Description

Name of Project: _____ Location: _____

Scope of Work: _____

Pipe Sizes: _____ Pipe Lengths: _____

*Owner Point of Contact (POC): _____ Owner POC Title: _____

Owner POC Phone Number: _____ Construction Cost: _____

Project Start Date: _____ Project End Date: _____

Additional Information: _____

*Owner is defined as entity the Bidder performed work for (i.e. City, County, Utility, State, etc.)

Bidder must provide a specific name with contact information that has previously verified. The design engineer may not serve as reference for the Bidder.

ESTIMATED QUANTITIES

ITEM	SPEC	DESCRIPTION	UNIT	QTY
1	103.1	Remove Concrete Curb (COSA Spec)	LF	365
2	103.3	Remove Concrete Sidewalks & Driveways (COSA Spec)	SF	2,973
3	202.1	Prime Coat (COSA Spec)	GAL	356
4	203.1	Tack Coat (COSA Spec)	GAL	1,350
5	205.2	Hot Mix Asphaltic Pavement, Type B (10' Comp. Depth) (COSA Spec)	SY	941
6	205.2	Hot Mix Asphaltic Pavement, Type B (12' Comp. Depth) (COSA Spec)	SY	40
7	205.3	Hot Mix Asphaltic Pavement, Type C (3' Comp. Depth) (COSA Spec)	SY	12,580
8	205.4	Hot Mix Asphaltic Pavement, Type D (2' Comp. Depth) (COSA Spec)	SY	2,505
9	208.1	Salvaging, Hauling, and Stockpiling Reclaimable Asphaltic Pavement (2' Depth)	SY	1,967
10	208.2	Salvaging, Hauling, and Stockpiling Reclaimable Asphaltic Pavement (3' Depth)	SY	12,232
11	401.1	Reinforced Concrete Pipe (Class III)(48")(COSA Spec)	LF	32
12	413.2	Flowable Fill (High Strength)	CY	30
13	500.1	Concrete Curb	LF	220
14	502.1	Concrete Sidewalks	SY	300
15	503.1	Portland Cement Concrete Driveway	SY	100
16	503.2	Portland Cement Concrete Driveway - Commercial	SY	50
17	503.5	Gravel Driveway (COSA Spec)	SY	142
18	506.1	Concrete Retaining Walls	CY	1
19	507.1	Chain Link Wire Fence (4' High) (Remove and Replace) (COSA Spec)	LF	60
20	SS1	Wood Privacy Fence (6' High) (Remove and Replace) (COSA Spec)	LF	230
21	507.7	Iron Fence (6' High) (Remove and Replace) (COSA Spec)	LF	10
22	515.1	Topsoil (COSA Spec)	CY	109
23	516.1	Bermuda Sodding	SY	1,000
24	520.1	Hydromulching, Residential or Commercial (COSA Spec)	SY	100
25	530.7	Barricades, Signs, Traffic Handling (COSA Spec) (Site 1, 15, 16-18)	EA	5
26	530.7	Barricades, Signs, Traffic Handling (COSA Spec) (Site 2-5, 7-11, 19-20)	EA	11
27	530.7	Barricades, Signs, Traffic Handling (COSA Spec) (Site 6, 12, 14)	EA	3
28	530.7	Barricades, Signs, Traffic Handling (COSA Spec) (Site 13)	EA	1
29	535.1	4 Inch Wide Yellow Line (COSA Spec)	LF	4,998
30	535.2	4 Inch Wide White Line (COSA Spec)	LF	1,250
31	535.4	8 Inch Wide White Line (COSA Spec)	LF	605
32	535.7	24 Inch Wide White Line (COSA Spec)	LF	393
33	535.9	Left White Arrow	EA	1
34	535.7	Traffic Button (Type W)	EA	126
35	535.7	Traffic Button (Type Y)	EA	126
36	539.5	12 Inch Wide Yellow Line	LF	136
37	540	SWPPP (Sites 1-20)	LS	1
38	550.1	Trench Excavation Safety Protection	LF	3,323
39	801	Tree and Landscape Protection (Level IIB) (COSA Spec)	LF	120
40	818	6" PVC Waterline (All Depths)	LF	59
41	836	Pipe Fittings, All Sizes and Types	TN	0.2
42	840	6" Water Tie-Ins	EA	2
43	841	Hydrostatic Testing	EA	1
44	844	2" Temporary Blow-Off Assembly	EA	2
45	848	8" PVC Gravity Sanitary Sewer Pipe (SDR-26, ASTM 2241, 160 PSI) (0'-6' Depth)	LF	378
46	848	8" PVC Gravity Sanitary Sewer Pipe (SDR-26, ASTM 2241, 160 PSI) (6'-10' Depth)	LF	448
47	848	8" PVC Gravity Sanitary Sewer Pipe (SDR-26, ASTM 2241, 160 PSI) (10'-14' Depth)	LF	206
48	848	10" PVC Gravity Sanitary Sewer Pipe (SDR-26, ASTM 2241, 160 PSI) (0'-6' Depth)	LF	536
49	848	10" PVC Gravity Sanitary Sewer Pipe (SDR-26, ASTM 2241, 160 PSI) (6'-10' Depth)	LF	64

ITEM	SPEC	DESCRIPTION	UNIT	QTY
50	848	10" PVC Gravity Sanitary Sewer Pipe (SDR-26, ASTM 2241, 160 PSI) (10'-14' Depth)	LF	708
51	SP814	10" Ductile Iron (DI) (Flanged Joint - Aerial Crossing)	LF	98
52	814	10" Ductile Iron (DI) (All Depths)	LF	258
53	848	12" PVC Gravity Sanitary Sewer Pipe (SDR-26, ASTM 2241, 160 PSI) (6'-10' Depth)	LF	153
54	848	12" PVC Gravity Sanitary Sewer Pipe (SDR-26, ASTM 2241, 160 PSI) (10'-14' Depth)	LF	300
55	849	Sanitary Sewer Acceptance Testing (Open Cut Only)	LF	3,149
56	850	Sanitary Sewer Structures	EA	1
57	851	Adjust Existing Manholes (W/ New Ring and Watertight Cover)	EA	14
58	852	4' Dia. Sanitary Sewer Manhole (0'-6' Depth) Watertight	EA	20
59	852	4' Dia. Shallow Flat Top Sanitary Sewer Manhole (0'-4' Depth) Watertight	EA	3
60	853	6' Dia. Shallow Flat Top Sanitary Sewer Manhole (0'-4' Depth) Watertight	EA	1
61	852	Extra Depth Manhole (>6')	VF	35
62	852	4' Dia. Sanitary Sewer Drop Manhole (0'-6' Depth) Watertight	EA	2
63	852	Extra Depth Drop Manhole (>6')	VF	20
64	852	Cast-In-Place Concrete, 4' Dia. (Permanent Doghouse)	EA	1
65	854	Sanitary Sewer Laterals (SDR-26, ASTM 2241)	LF	1,275
66	854.1	Two-Way Sanitary Sewer Cleanout (Heavy Duty)	EA	86
67	854.2	One-Way Sanitary Sewer Cleanout	EA	3
68	855	Reconstruction of Existing Manholes	EA	5
69	856	24" Steel Casing (0.375") (Open Cut)	LF	15
70	856	8" PVC Carrier Pipe (Open Cut)	LF	15
71	858	Concrete Encasement, Cradles, Saddles, & Collars	CY	61
72	860	Vertical Stacks	VF	140
73	862	Abandonment of Sanitary Sewer Mains (Grouted Mains Only)	LF	1,284
74	862	Abandonment of Sanitary Sewer Manholes	EA	10
75	864-S2	Bypass Pumping (Large Diameter Sanitary Sewer) (Site 14)	EA	1
76	865	Bypass Pumping (Small Diameter Sanitary Sewers) (All Sites)	EA	20
77	866	Sewer Main Pre-Television Inspection (8"-15" Dia.)	LF	5,957
78	866	Sewer Main Post-Television Inspection (8"-15" Dia.)	LF	3,165
79	900	Pipe Bursting 8" Sanitary Sewer Pipe (DR 13.5 160 PSI) (All Depths)	LF	1,792
80	900	Pipe Bursting 10" Sanitary Sewer Pipe (DR 13.5 160 PSI) (All Depths)	LF	119
81	900	Pipe Bursting 12" Sanitary Sewer Pipe (DR 13.5 160 PSI) (All Depths)	LF	109
82	901	Install CIPP 8" Sanitary Sewer Pipe (Hot Water) (All Depths)	LF	438
83	910.1	Manhole Rehabilitation (Standard 4' Dia. Manhole)	VF	105
84	1103.1	Point Repairs for 18" and Smaller Dia. (All Depths) Including up to 9 LF of Piping	EA	5
85	1103.2	Extra Length Point Repair, 18" and Smaller Dia. (All Depths)	LF	24
86	1103.3	Obstruction Removal by Remote Device, 18" and Smaller Dia. (All Depths)	EA	1
87	1109	Service Reconnection By Remote Control Cutting Device (All Depths)	EA	2
88	1109	Service Reconnection By Open Cut Excavation (All Depths)	EA	37
89	SS 1380.1	Pre-Construction Inspection and Video Documentation	EA	3
90	SS 3300.1	Sanitary Sewer Private Laterals (4"-6") (Mebane)	EA	5
91	SS 3300.2	Sanitary Sewer Private Laterals (4"-6") (Picoso)	EA	5
92	SS 6001	Portable Changeable Message Sign	EA	13
93	SC3	CPS Energy Allowance	ALW	1
94	2050	Structure (Shed) Relocation (4419 Hall Park)	LS	1
95	2051	Concrete Foundation Removal (4419 Hall Park)	LS	1
96	100	Mobilization (Max. 10% of Items 1 to 96)	LS	1
97	101.1	Preparing Right-of-Way (Max. 5% of Items 1 to 96)	LS	1

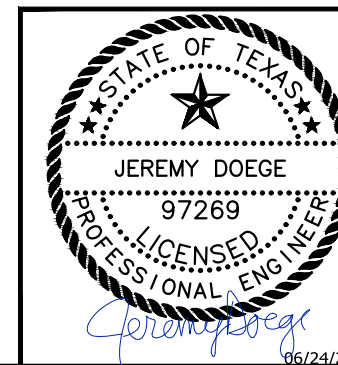
1

MILL & OVERLAY ESTIMATED QUANTITIES (BY OTHERS)

ITEM	SPEC	DESCRIPTION	UNIT	QTY
1	202.1	*Prime Coat (By Others)	GAL	513
2	203.1	*Tack Coat (By Others)	GAL	414
3	205.3	*Hot Mix Asphaltic Pavement, Type C (3' Comp. Depth) (By Others)	SY	1552
4	205.4	*Hot Mix Asphaltic Pavement, Type D (2' Comp. Depth) (By Others)	SY	2553
5	208.1	*Salvaging, Hauling, and Stockpiling Reclaimable Asphaltic Pavement (2' Depth) (By Others)	SY	2553
6	208.2	*Salvaging, Hauling, and Stockpiling Reclaimable Asphaltic Pavement (3' Depth) (By Others)	SY	1552
7	535.1	*4 Inch Wide Yellow Line (By Others)	LF	58
8	535.2	*4 Inch Wide White Line (By Others)	LF	20
9	535.4	*8 Inch Wide White Line (By Others)	LF	496
10	535.7	*24 Inch Wide White Line (By Others)	LF	706

**NOTE: TREE PRUNING AND TREE REMOVAL SHALL BE SUBSIDIARY TO SAWS SPECIFICATION 101 PREPARATION OF RIGHT-OF-WAY.

*NOTE: MILL AND OVERLAY OF SPECIFIED SITES WILL BE DONE BY OTHERS UNDER A SEPARATE CONTRACT. MILL AND OVERLAY QUANTITIES ARE PROVIDED FOR CONTRACTOR FOR INFORMATIONAL PURPOSES ONLY. CONTRACTOR TO COORDINATE WITH SAWS ON SITES THAT WILL REQUIRE MILL AND OVERLAY ASPHALT RESTORATION. CONTRACTOR WILL BE RESPONSIBLE FOR TRENCH RESTORATION ASSOCIATED WITH POINT REPAIR REHABILITATION OR OPEN-CUT RESTORATION.



1	6/24/21	ADDENDUM 1		
NO	DATE	DESCRIPTION	DWG	CHK
REVISIONS				
100% SUBMITTAL				
BPC CENTRAL SEWERSHED PACKAGE 3A				
ESTIMATED QUANTITIES				
DRAWN BY: JA, JES		JOB NO:		SHEET
CHECKED BY: JD		20-4526		G-006